



PAMIBIA UNIVERSITY
OF SCIENCE AND TECHNOLOGY

FACULTY OF ENGINEERING AND THE BUILT ENVIRONMENT

DEPARTMENT OF ARCHITECTURE, PLANNING AND CONSTRUCTION

QUALIFICATION	BACHELOR OF REGIONAL AND RURAL DEVELOPMENT		
QUALIFICATION CODE:	07BRAR		
COURSE CODE:	IEM621S	COURSE NAME:	INTEGRATED ENVIRONMENTAL MANAGEMENT
NQF LEVEL:	6	NQF CREDITS:	12
SESSION:	January 2023	PAPER:	THEORY
DURATION:	3 HOURS	MARKS:	100

SECOND OPPORTUNITY/SUPPLEMENTARY EXAMINATION QUESTION PAPER	
EXAMINER(S)	Mr. Cyrlus Tjipetekera
MODERATOR:	Prof. M. Hauptfleisch

<ol style="list-style-type: none">1. Answer ALL the questions2. Write clearly and legibly3. Number the answers clearly4. Do not forget to write your Student Number on the Answer Book(s)
--

THIS QUESTION PAPER CONSISTS OF 4 PAGES (Including this front page)

Question 1

- a) What do you understand by the term Global Change? (2)
- b) Why do you, a future Regional and Rural Development Planner, have to study and be able to apply the Namibian Environmental Management Act and its Regulations? (4)

[6]

Question 2

Compare and discuss the approaches and levels of decision-making between a Strategic Environmental Assessment (SEA) and an Environmental Impact Assessment (EIA).

(8)

[8]

Question 3

- a) Explain the role of *public participation* ('stakeholder engagement') in an environmental impact assessment. (15)
- b) Outline the four steps that are followed when one is carrying out a waste audit and explain briefly what each step represents? (8)

[20]

Question 4

- a) Give your opinion on the importance of *information* and *knowledge sharing* for good environmental management/practice. (4)
- b) Distinguish between *baseline monitoring*, *impacts monitoring* and *compliance monitoring*. (6)

[10]

Question 5

You want to buy a new stove and have narrowed down the options to three comparable stoves, with the following labels:



A



B



C

- a) What type of label is this? (1)
- b) What are the advantages of this type of labelling for manufacturers? (3)
- c) Which stove would you buy if you are concerned about the environment? Justify your answer. (3)
- d) You also want to buy wooden furniture and find some with the logo of the Forestry Stewardship Council. What does this logo signify? (3)



[10]

Question 6

- a) Name seven (7) actions that Namibia must undertake to capitalize on eco-labelling? (7)
- b) The Driver-Pressure-State-Impact-Response Model (DPSIR) is a useful tool when measuring the pressures and stresses exerted on the natural resources. Using the DPSIR model construct a real-life scenario that reflect all the components of the DPSIR model. (10)

[17]

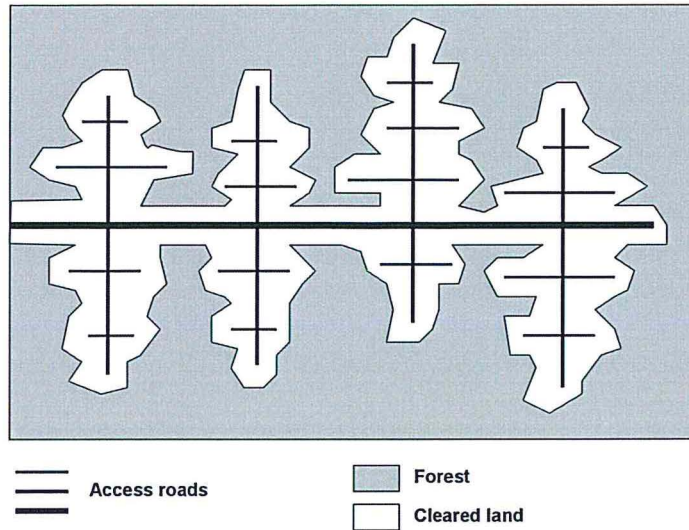
Question 7

- a) Outline each step in the life cycle of a pair of blue denim jeans, from growing the cotton until the point where you buy the jeans. (7)
- b) Describe five (3) negative environmental impacts associated with this part of the product's life cycle. (3)
- c) Propose five (5) mitigation measures to minimise the negative environmental impacts that you have described in Q 7 (b). (5)

[15]

Question 8

Scenario: The diagram below represents a fragmented landscape intersected by roads in Kavango East Region, where logging (cutting of timber) has caused deforestation. You are the team leader of a restoration project.



- a) Explain why *fragmentation* of any natural landscape is an ecological problem. (4)
- b) How would you go about treating the *causes* – rather than the symptoms – of degradation (fragmentation) in this specific case? (3)
- c) How could you achieve such linkages in practice, for this particular scenario? (3)

[14]

TOTAL: 100

**** THE END ****

 NAMIBIA
UNIVERSITY
OF SCIENCE AND
TECHNOLOGY

P/Bag 13300
Windhoek
NAMIBIA

2022-10-17

DEPARTMENT OF ARCHITECTURE
AND SPATIAL PLANNING